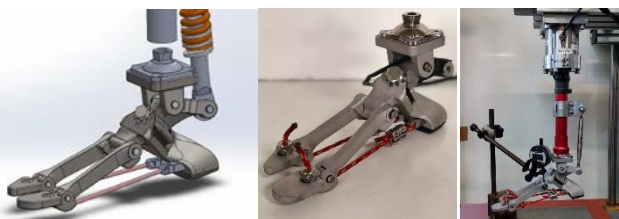


## 2019 Course Group Project Presentations Tuesday June 11<sup>th</sup> Aula M2, 14.30 – 17.30

**Combined effect of plate stiffness, edging angle and snow hardness on Edge Load Profile curves of alpine skis**

Bonato L., Monti G., Mazzanti L., Roveroni M., Tancon L.



**Construction and Validation of a Biofidelic foot/ankle/leg prosthesis for gait simulation on footwear**



Beneduce B., Palladino M.

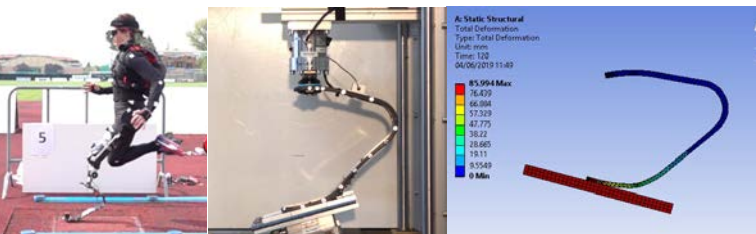
**“In vivo” kinetic & kinematic analysis of three walking conditions wearing hiking shoes with different stiffness and boots with GripWalk sole**

Faggin A., Meneghetti S., Zampini G., Zardini C., Zullo G.



**Development of stiffness bench tests for running specific prostheses and FEM analyses validation**

Belluzzo F., Luisi A., Picci G., Vibrante M., Visconti E.



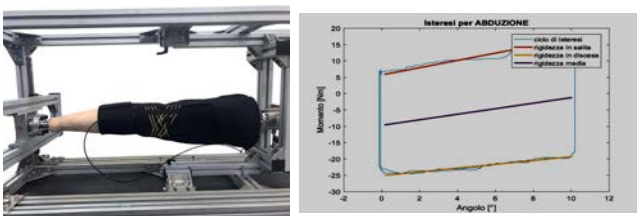
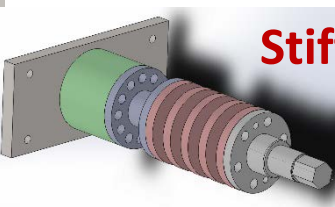
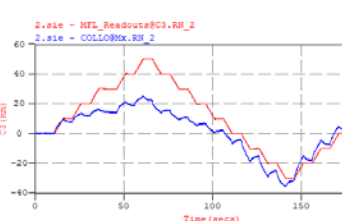
**Comparison of running kinematics & kinetics during field and Skillrun treadmill sledge pushing**

Cavarzan L., Giacomello M., Fabbian N., Marin M., Zanardi A.



**Stiffness properties of the biofidelic Hybrid III neck: bench and pilot tests development**

Marin L., Giabardo A.



**The effects of pressure and knee flexion angles on the stiffness of a pressurized knee brace for alpine skiing**

Contiero G., Michelazzi D., Righetto M.



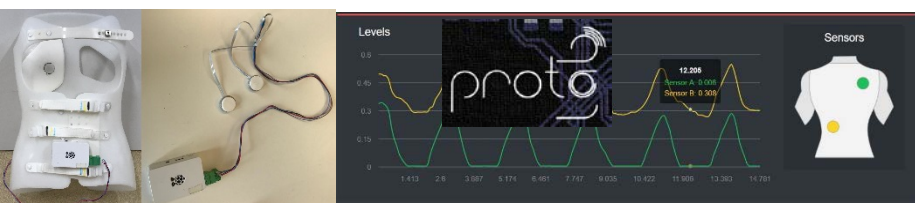
**The effect of training a paraplegic subject with an Active Exoskeleton on walking velocity, step length and EMG**

Foresti A., Lentini E., Michieletto F., Misera L., Pullin E., Silvestroni A., Visentin A.



**Do strap closure and pad thickness affect pressure under a smart anti-scoliosis brace?**

Cesaro G., Debiasi G., Turato V., Zampato S.



**Grip strength analysis of the improved prosthetic Handy Hand**

Buosi A., Cortivo D., Salomoni R.

